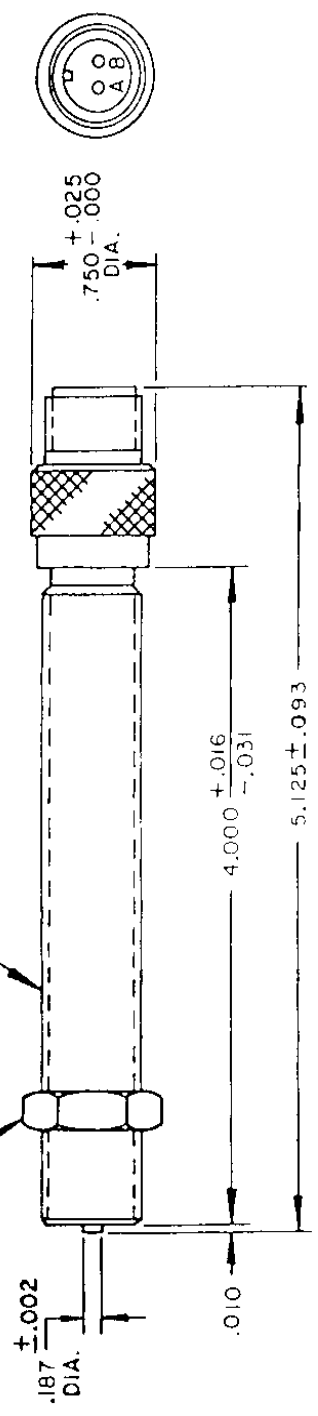


REVISIONS		
LTR	DESCRIPTION	DATE
A	INDUCTANCE TOL. ADDED, CN.	8-30-84
B	FH REMOVED	12-18-91

LOCKNUT  
5/8 - 18 UNF - 2A



TEMPERATURE RANGE	OUTPUT VOLTAGE PEAK TO PEAK (SEE NOTE 1)	DC RESISTANCE AT 75° F	INDUCTANCE AT 1KHZ	OUTPUT CONNECTOR	INSULATION RESISTANCE	NET WEIGHT
-65° F TO +225° F	15-17 VOLTS (SEE NOTE 1)	550-650 OHMS	260 mH ± 10%	MATES WITH MS 3106A - 10 SL - 4S (SEE NOTE 2)	100 MEGOHMS MIN AT 500 VDC, COIL TO HOUSING	OZ. AVG.

NOTES :

- TESTED AT 1000 INCHES/SECOND WITH AN 8 PITCH, 12 TOOTH GEAR, 0.005" CLEARANCE AND 100K OHM LOAD SHUNTED BY 250 MMF.
- WITH APPROACH OF FERROUS METAL, PIN "B" IS POSITIVE WITH RESPECT TO PIN "A".

CONSTRUCTION:  
HOUSING- 303 STAINLESS STEEL  
POLE PIECE- 416 STAINLESS STL.  
POTTING- EPOXY RESIN

UNLESS OTHERWISE SPECIFIED DIMENSIONS ARE IN INCHES TOLERANCES ARE FRACT. DEC. ANGLES ± 1/64 .XXX ± .005 ± 1/2° .XX ± .01		<b>DYNALCO CORPORATION</b> FORT LAUDERDALE, FLORIDA DRAWN: <i>[Signature]</i> DATE: 4-8-83 APPROVED: <i>[Signature]</i> 4/8/83	
MATERIAL:		TITLE	
FINISH:		MAGNETIC PICKUP MODEL M203	
DO NOT SCALE THIS DRAWING		SCALE	REV.
		A	A
		8000203	