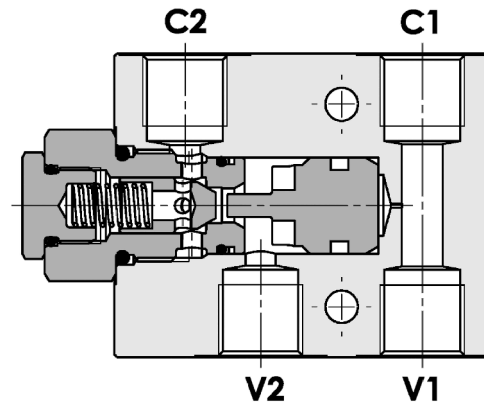
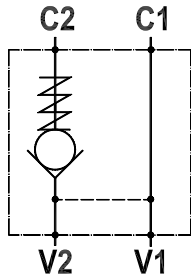


**Valvola di blocco pilotata semplice, montaggio in linea**
Single pilot operated check valve, line mounted

Rev.01-2010/02

**SPECIFICHE TECNICHE**

Materiali: corpo in alluminio (a richiesta in acciaio). I componenti interni sono in acciaio trattato termicamente.

Portata: fino a 85 l/min

Pressione max.: vedi tabella pag.2

Pressione di apertura: standard 2,5 bar, a richiesta 5-10 bar

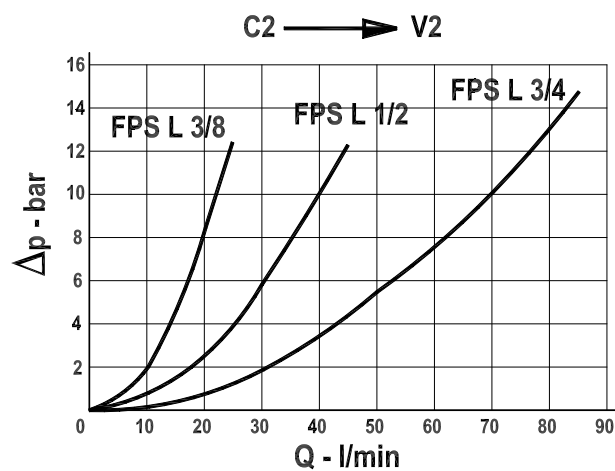
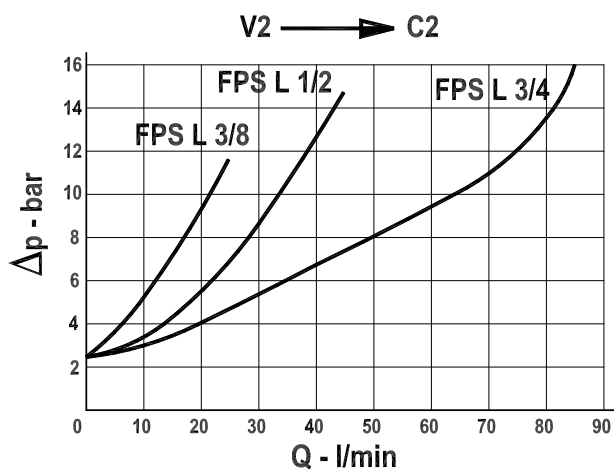
TECHNICAL SPECIFICATIONS

Materials: body in aluminum (steel on request). Internal components in hardened steel.

Rated flow: up to 85 l/min

Max. pressure: see data sheet page 2

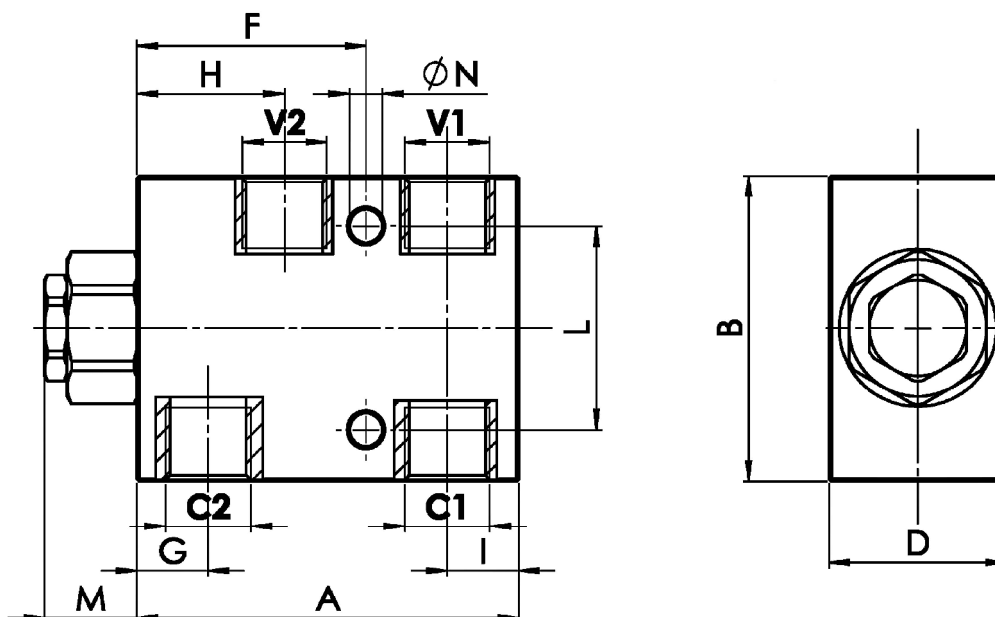
Cracking pressure: 2,5 bar standard, 5-10 bar on request

DIAGRAMMA PERDITE DI CARICO
PRESSURE DROP CURVES



Valvola di blocco pilotata semplice, montaggio in linea
Single pilot operated check valve, line mounted

Rev.01-2010/02



TIPO TYPE	PORTATA MAX. FLOW	PRESSIONE MAX. PRESSURE	V1-C1 V2-C2	A	B	D	F	G	H	I	L	M	N	RAPP. DI PILOTAGGIO PILOT RATIO	PESO WEIGHT
	L/MIN	BAR	BSPP	mm	mm	mm	mm	mm	mm	mm	mm	mm	mm		Kg
FPS L 3/8"	30	250 - 350(S)	3/8"	75	60	35	45	14	29	14	40	18.5	6.5	1 : 7	0.480 - 1.110(S)
FPS L 1/2"	45	250 - 350(S)	1/2"	95	70	35	55	21	38	19	40	15	8.5	1 : 3.5	0.620 - 1.530(S)
FPS L 3/4"	85	250 - 350(S)	3/4"	135	90	50	80	30	57.5	22	50	14	10.5	1 : 4	1.650 - 4.050(S)

Queste valvole, data la loro configurazione, non consentono una elevata contropressione allo scarico
 These valves, owing to their configuration, can't allow for an high discharge pressure

ESEMPIO DI ORDINAZIONE - ORDERING CODE EXAMPLE

F P S **L** **3 / 8** **2 , 5** **G** ***** *****

<p>3/8 . 3/8" BSPP * 1/2 . 1/2" BSPP 3/4 . 3/4" BSPP Connessioni - Port sizes</p> <p>2.5 bar (std) . 5 bar . 10 bar * Pressione apertura ritengo, omettere se std Cracking pressure, omit if std</p>	<p>Guarnizioni . Seals: V=Viton * Omettere se BUNA-N . Omit if BUNA-N</p> <p>Materiale corpo: omettere se alluminio, S=acciaio * Body material: omit if aluminum, S=steel</p> <p>Guarnizione sul pilota. omettere se non richiesta * With o-ring on pilot valve, omit if not requested</p>
---	--