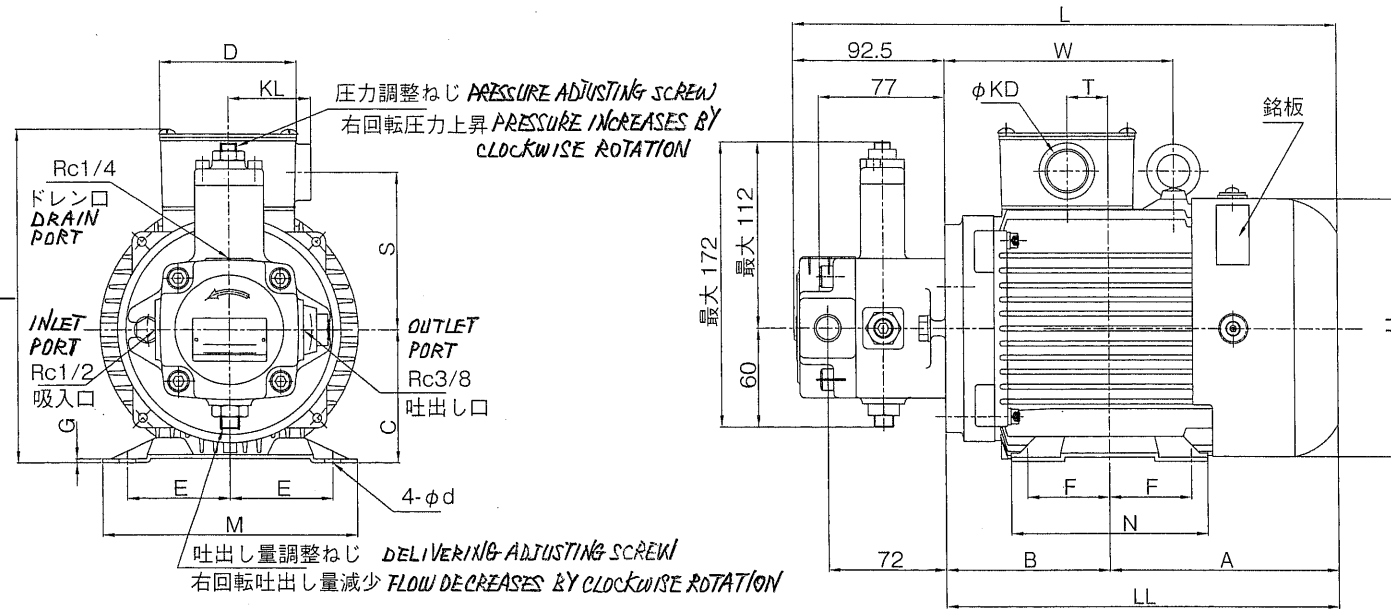
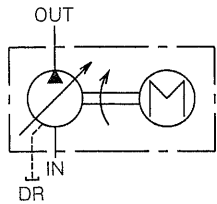


~~HBPV-3B4T-VB1-12A*-C~~ NEW MODEL

MODEL: HBPV-3B4T-VB1-18A1-C (CC NUMBER AFFIXED)



- MOTOR CAPACITY: 0.75kW (4P 3-PHASE AC200V)
- VARIABLE DISPLACEMENT VANE PUMP
 (DELIVERY: 18 L/min (1,800 r/min))
 (MAX PRESSURE: 2 MPa)
 (PRESSURE ADJUSTING RANGE: 0.8 ~ 2 MPa)



油圧ポンプ・油圧モータ

形 式	A	B	C	D	E	F	G	H	I	L	LL	M	N	KD	KL	d	S	T	W	質量 kg
HBPV-3B4T-VB1-18A1-C	140	100	80	83	62.5	50	2.3	157	200	332.5	240	155	120	G3/4	50	10	95	25	140	18.5
HBPV-3B4T-VB1-12A*-C	151	110.5	80	83	70	52.5	0.2	175	210	305	272.5	170	150	G3/4	50	10	100	35	140.5	22.0

HBPV-3*4TL-L-VB1-12A*-C