

5 YEAR
WARRANTY

MADE IN
USA

OMEGA
CARESM
Extended Warranty
Program



User's Guide

Shop online at

omega.com[®]

Ω OMEGA[®]

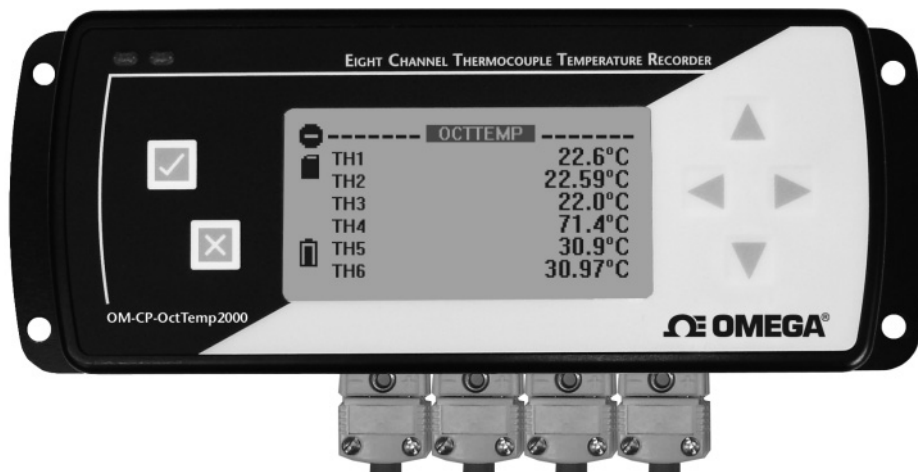
omega.com

e-mail: info@omega.com

*For latest product manuals:
omegamanual.info*

ISO 9001
CERTIFIED
CORPORATE QUALITY
STAMFORD, CT

ISO 9002
CERTIFIED
CORPORATE QUALITY
MANCHESTER, UK



OM-CP-OCTTEMP2000 **8-Channel Thermocouple** **Datalogger with LCD Display**



OMEGAnet® Online Service omega.com	Internet e-mail info@omega.com
---	---

Servicing North America:

U.S.A.:
ISO 9001 Certified
One Omega Drive, Box 4047
Stamford, CT 06907-0047
Tel: (203) 359-1660
FAX: (203) 359-7700
e-mail: info@omega.com

Canada:
976 Bergar
Laval (Quebec) H7L 5A1, Canada
Tel: (514) 856-6928
FAX: (514) 856-6886
e-mail: info@omega.ca

For immediate technical or application assistance:

U.S.A. and Canada: Sales Service: 1-800-826-6342/1-800-TC-OMEGA®
Customer Service: 1-800-622-2378/1-800-622-BEST®
Engineering Service: 1-800-872-9436/1-800-USA-WHEN®

Mexico:
En Español: (001) 203-359-7803
e-mail: espanol@omega.com
FAX: (001) 203-359-7807
info@omega.com.mx

Servicing Europe:

Czech Republic: Frystatska 184, 733 01 Karviná, Czech Republic
Tel: +420 (0)59 6311899
FAX: +420 (0)59 6311114
Toll Free: 0800-1-66342
e-mail: info@omegashop.cz

Germany/Austria: Daimlerstrasse 26, D-75392 Deckenpfronn, Germany
Tel: +49 (0)7056 9398-0
FAX: +49 (0)7056 9398-29
Toll Free in Germany: 0800 639 7678
e-mail: info@omega.de

United Kingdom:
ISO 9002 Certified
One Omega Drive, River Bend Technology Centre
Northbank, Irlam, Manchester
M44 5BD United Kingdom
Tel: +44 (0)161 777 6611
FAX: +44 (0)161 777 6622
Toll Free in United Kingdom: 0800-488-488
e-mail: sales@omega.co.uk

It is the policy of OMEGA Engineering, Inc. to comply with all worldwide safety and EMC/EMI regulations that apply. OMEGA is constantly pursuing certification of its products to the European New Approach Directives. OMEGA will add the CE mark to every appropriate device upon certification. The information contained in this document is believed to be correct, but OMEGA accepts no liability for any errors it contains, and reserves the right to alter specifications without notice.
WARNING: These products are not designed for use in, and should not be used for, human applications.

Table of Contents

Section 1: Overview	2
Other Documentation	2
Contacting Us	2
Section 2: Introducing the OM-CP-OCTTEMP2000	3
Device Overview	3
Display Overview	4
Specifications	5
Section 3: Device Function	7
Channel Options	7
Show or Hide Channels on the Main Screen	7
Change Channel Display Size	7
Change Channel Units	8
Statistics	9
View Channel Statistics	9
Clear Channel Statistics	9
Time and Date Information	9
Push-button Start	10
Section 4: Device Menus	11
Device Status Menu	11
Device Setup Menu	12
Section 5: Software Features	13
Enable and Disable Channels	13
Name Channels	14
Change Device ID	15
Section 6: Battery Information	16
Section 7: Computer Interface	17
Warranty/Disclaimer	18

Section 1: Overview

1.1 Other Documentation

Other documents which may be of interest to you are the Software Operating Manual and Data Logger Quick Start Guide. To obtain the most current versions of both of these documents please visit our website (www.omega.com).

1.2 Contacting Us

For additional sales, service, and support you may contact our office directly:

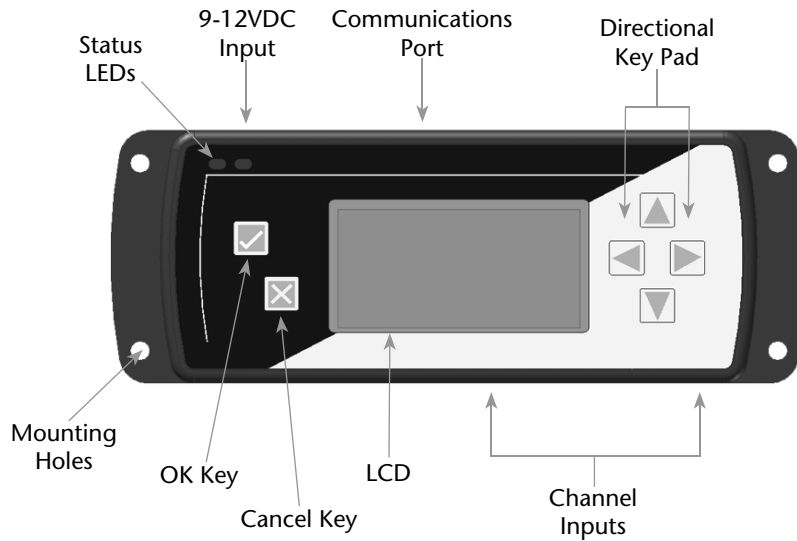
OMEGA Engineering, INC.
One Omega Drive
Stamford, Connecticut 06907-0047
P.O. Box 4047

(800)-848-4286 or (203)-359-1660
Fax: (203)-359-7700




info@omega.com

Section 2: Introducing the OM-CP-OCTTEMP2000

1.2 Device Overview











Keypad Functions

	OK Key
	Cancel Key
	Up/Down Directional Keys
	Left/Right Directional Keys

2.2 Display Overview



Status Indicators

	Battery Power (Full, Half-full, Empty)
	Memory Remaining (Empty, Half-full, Full)
	Device is running
	Device is stopped
	Delay Start
	Push-button (Manual) Start
	Device reset has occurred
	External power present

2.3 Specifications

Internal Temperature Channels

Range: -20 to +60°C
 Resolution: 0.1°C
 Accuracy: $\pm 0.5^\circ\text{C}$ (0 to +50°C)

Thermocouple Channels

Types: J, K, T, E, R, S, B, and N
 Connection: Female sub-miniature (SMP)
 Cold Junction Compensation: Automatic, based on internal channel
 Maximum Thermocouple Resistance: $1000\Omega < 100\Omega$ recommended

Thermocouples:

Type	Range	Resolution	Accuracy
J	-200 to +760°C	0.1°C	$\pm 0.5^\circ\text{C}$
K	-200 to +1370°C	0.1°C	$\pm 0.5^\circ\text{C}$
T	-200 to +400°C	0.1°C	$\pm 0.5^\circ\text{C}$
E	-200 to +980°C	0.1°C	$\pm 0.5^\circ\text{C}$
R	-50 to +1760°C	0.1°C	$\pm 2.0^\circ\text{C}$
S	-50 to +1760°C	0.1°C	$\pm 2.0^\circ\text{C}$
B	+50 to +1820°C	0.1°C	$\pm 2.0^\circ\text{C}$
N	-200 to +1300°C	0.1°C	$\pm 0.5^\circ\text{C}$

Dot-Matrix LCD

Dimensions: 2.5" x 1.375" (63mm x 35mm)
 Text: Configurable channel text size
 Indicators: Power, status, memory
 Backlight: Configurable with auto shut-off and contrast adjustment

Start/ Stop Modes

Software programmable start time and date, up to six months in advance, or manual (push-button) start.
 Programmable stop time.

Memory

500,000 readings per channel with all channels enabled; 4,000,000 total readings; software configurable memory wrap

Reading Rate

4 readings per second (4Hz) up to 1 reading every 24 hours

Calibration	Digital calibration through software. Calibration date automatically recorded within device. NIST traceable certificate available.
Power Supply	Primary Source: 9V lithium or alkaline battery, user replaceable Secondary Source: 7.5 - 24V DC external, 100mA max
Battery Life	Eighteen month battery life with display off. Three months typical with continuous display use.
Data Format	Time and date stamped, °C, °F, K, °R, μV, mV, V
Time Accuracy	±1 minute per month
Computer Interface	PC serial or USB (interface cable required); 115,200 baud
Software	Windows 95/98/ME/NT/2000/XP/Vista based software
Operating Environment	-20 to +60°C, 0 to 95%RH non-condensing
Dimensions	7.24" x 2.7" x 1.14"
Weight	15oz.
Enclosure	Black anodized aluminum



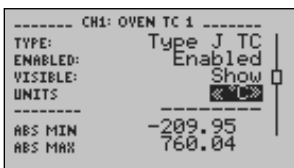
Large Font

To change channel display size from the **Home Screen**:

1. Press to enter the **Main Menu**
2. Use to highlight **Setup Menu**
3. Press to enter the **Setup Menu**
4. Use to highlight **Channel Size**
5. Use to choose the desired channel size
6. Press once to return to the **Main Menu**
7. Press again to return to the **Home Screen**

3.4 Change Channel Units

Channels can be customized to display readings in a variety of convenient units. Units available for selection will vary according to channel type.



Note: Changing display units will not affect logged data.

To change channel display from the **Home Screen**:

1. Press to view first **channel screen**
2. Use to view additional channels
3. On desired channel screen use to highlight **Units**
4. Use to choose the desired unit option
5. Press to return to the **Home Screen**

—OR—

1. Use to highlight desired channel
2. Press to view **channel screen**
3. Use to highlight **Units**
4. Use to choose the desired unit option
5. Press to return to the **Home Screen**

Note: Hit X to update all channels.

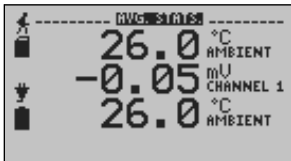
3.5 Statistics

Statistical information is generated based on the data measured by each channel.

Note: Information is only generated while the data logger is running and the reset does not affect statistics on download.

3.6 View Channel Statistics

Minimum, maximum, and average values are calculated for each channel and displayed in the statistics screens.

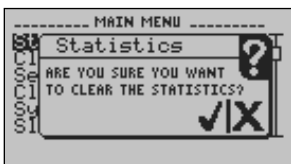


To view channel statistics from the **Home Screen**:

1. Use ◀▶ to view desired statistic screen
2. In statistics screen use ▲▼ to view statistics for each channel
3. Use ◀▶ to scroll back to the **Home Screen**

3.7 Clear Channel Statistics

Statistics may be cleared and reset at any time.

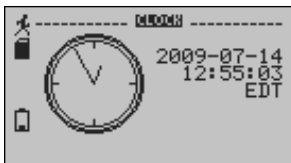


To clear channel statistics from the **Home Screen**:

1. Press ⓧ to enter the **Main Menu**
2. Use ▲▼ to highlight **Clear Statistics**
3. Press ✓ to select **Clear Statistics**
4. Press ✓ to confirm statistics clear, ⓧ to cancel

3.8 Time and Date Information

Current time and date information is available on the LCD. System time is automatically synchronized with your computer's clock.



To view time and date information from the **Home Screen**:

1. Press to enter the **Main Menu**
2. Use to highlight **Clock**
3. Press to select **Clock** and view time and date information

3.9 Manual (Push-button) Start

Devices set to start in Manual (Push-button) mode can be started through the device's display screens at the user's convenience.



To manually start device from the **Home Screen**:

1. Press to enter the **Main Menu**
2. Use to highlight **Start Device**
3. Press to select **Start Device**
4. Press to confirm device start, press to cancel

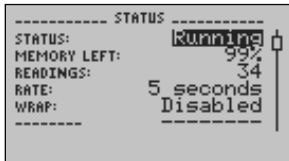
Section 4: Device Menus

4.1 Device Status Menu

Information such as current recording status, reading rate, stop date and time, and calibration information can be found in the Device Status Menu.

To access the **Device Status Menu** from the **Home Screen**:

1. Press **ⓧ** to enter the **Main Menu**
2. Use **▲ ▼** to highlight **Status**
3. Press **ⓧ** to enter the **Device Status Menu**



Status – Device’s current recording status.

Running - device is actively recording data

Stopped - device is not actively recording data

Delay - device is in Delay Start mode (start scheduled for future)

Manual - device is in Manual (push-button) Start mode

Memory Left – Percentage of memory available to store readings

Readings – Number of readings currently stored in device’s memory

Rate – Reading rate (configurable using data logger software)

Wrap – Memory wrap (configurable using data logger software)

Enabled - when memory is full device will overwrite oldest data

Disabled - when memory is full device will stop recording data

Start Date/Time – Date and time device began recording data

Stop Date/Time – Date and time device will stop recording data (due to full memory or other user configured parameter)

Display – Options for display visibility

Use **◀ ▶** to select

Auto - display turns off after two minutes of inactivity

On - display always on

Backlight – Options for use of display backlight

Use **◀ ▶** to select

Auto - backlight turns off after five seconds of inactivity

On - backlight always on

Off - backlight always off

LED – Options for use of status LEDs

Use **◀ ▶** to select

Enabled - status LEDs flash to indicate reading status

Disabled - LEDs off

Contrast – Set screen contrast value

Use **◀ ▶** to set desired contrast value

Battery Type – User defined based on the type of battery currently installed in the device

Use **◀ ▶** to select Lithium or Alkaline battery

Battery Life – Percentage of battery power remaining

Battery Voltage – Voltage supplied to the device by the battery

External Power – Presence of external power supply

External Voltage – Voltage supplied to the device by external power supply

Display – Options for display visibility

Use **◀ ▶** to select

Auto - display turns off after two minutes of inactivity

On - display always on

Backlight – Options for use of display backlight

Use ◀▶ to select

Auto - backlight turns off after five seconds of inactivity

On - backlight always on

Off - backlight always off

LED – Options for use of status LEDs

Use ◀▶ to select

Enabled - status LEDs flash to indicate reading status

Disabled - LEDs off

Contrast – Set screen contrast value

Use ◀▶ to set desired contrast value

Battery Type – User defined based on the type of battery currently installed in the device

Use ◀▶ to select Lithium or Alkaline battery

Battery Life – Percentage of battery power remaining

Battery Voltage – Voltage supplied to the device by the battery

External Power – Presence of external power supply

External Voltage – Voltage supplied to the device by external power supply

Reading Date/Time – Date and time of last recorded reading

Cal Date – Date of last device calibration

Cal Due – Date device is due for recalibration

Note: It is important to keep your device properly calibrated to ensure accurate readings. Contact Omega for further information regarding calibration services.

4.2 Device Setup Menu

Functions in the Device Setup Menu allow you to change home screen, display, and battery options.

To access the **Device Setup Menu** from the **Home Screen**:

1. Press to enter the **Main Menu**
2. Use ▲ ▼ to highlight **Setup Menu**
3. Press to enter the **Setup Menu**



Channel Size – Options for channel font size displayed on Home Screen.

Use ◀▶ to select font size

Small - up to six channels displayed on Home Screen

Medium - up to three channels displayed on Home Screen

Large - up to two channels displayed on Home Screen

Update Screen – Frequency of Home Screen Update

Use ◀▶ to select

Auto - Home Screen updates at user defined interval

Reading - Home Screen updates each time a reading is taken

Update After – User defined Home Screen update frequency

Use ◀▶ to set desired frequency

Auto-Scroll – When device is idle, screen view alternates between home and statistics screens

Use ◀▶ to Enable/ Disable auto-scroll

Section 5: Software Features

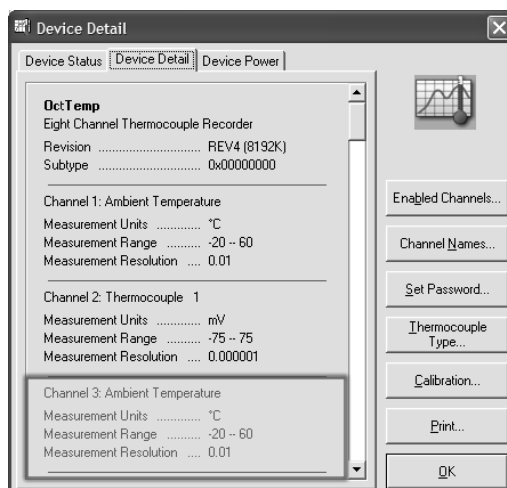
This section details several features of the data logger software that are particularly useful with the OM-CP-OCTTEMP2000 device. For further information regarding the software, please visit www.omega.com.

5.1 Enable and Disable Channels

The user may choose to enable or disable channels using the software. Data from disabled channels will be visible on the LCD, but readings will not be recorded to the device's memory. Disabling a thermocouple channel also disables its corresponding ambient temperature channel.

To enable/disable channels in the software:

1. In the **Device** drop down menu select **Identify Device and Read Status** to view the **Device Status** screen
2. Select the **Device Detail** tab
3. Click **Enabled Channels** to show the **Enabled Channels Screen**
4. To edit the enabled channels click **Change**
5. Check the boxes next to channels to be enabled
6. Click **Save** to save changes
7. Click **OK** to return to the **Device Detail** screen
8. Click **OK** to return to the software's main screen



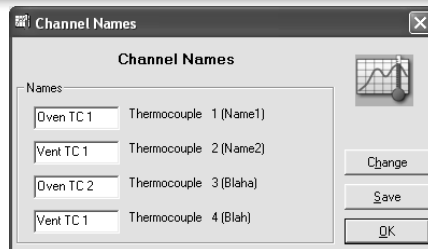
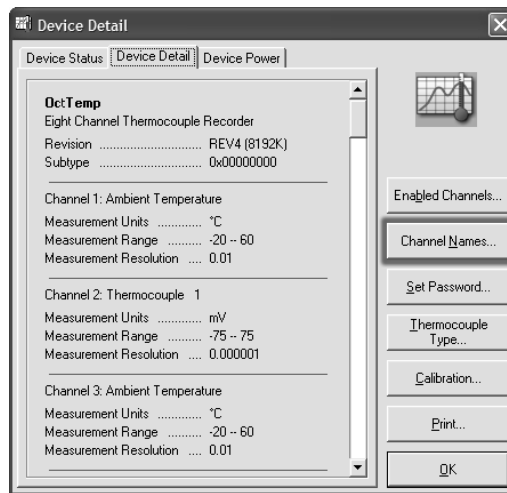
Notice that disabled thermocouple and ambient channels appear greyed-out on the Device Detail screen.

5.2 Name Channels

Each channel can be given an unique name for easy identification. Channel names are visible on the LCD and are used throughout the software and data files.

To name channels in the software:

1. In the **Device** drop down menu select **Identify Device and Read Status** to view the **Device Status** screen
2. Select the **Device Detail** tab
3. Click **Channel Names** to show the **Channel Names Screen**
4. To edit the channel names click **Change**
5. Type desired channel name in text box next to each channel
6. Click **Save** to save changes
7. Click **OK** to return to the **Device Detail** screen
8. Click **OK** to return to the software's main screen

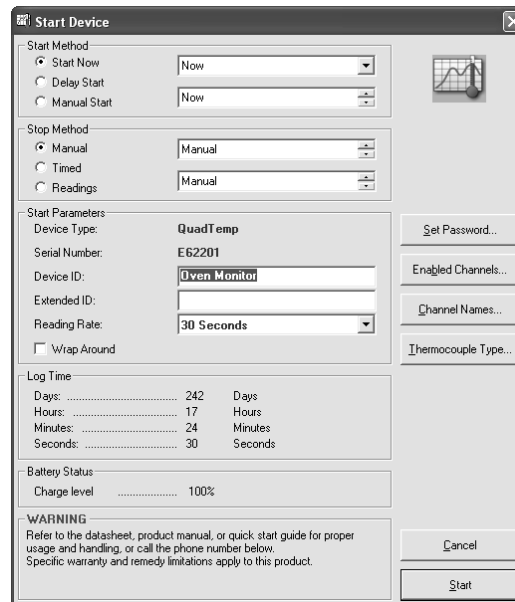


5.3 Change Device ID

Each OM-CP-OCTTEMP2000 can be given a device ID allowing for easy identification among multiple devices. Device IDs are displayed on the Home Screen of the LCD and are used throughout the software and data files.

To change Device ID in the software:

1. In the **Device** drop down menu select **Start Device** to view the **Start Device** screen
2. In the **Device ID** entry field type the desired Device ID name
3. Select other desired start functions
4. Click **Start** to start the device and save Device ID information



Device type and user defined Device ID are displayed on the Home Screen.

Section 6: Battery Information

BATTERY WARNING

This data logger contains a lithium battery. Do not cut the battery open, incinerate, or recharge. Do not heat lithium batteries above the specified operating temperature.* Dispose of the battery in accordance with local regulations.

*See the individual specification sheets at www.omega.com.

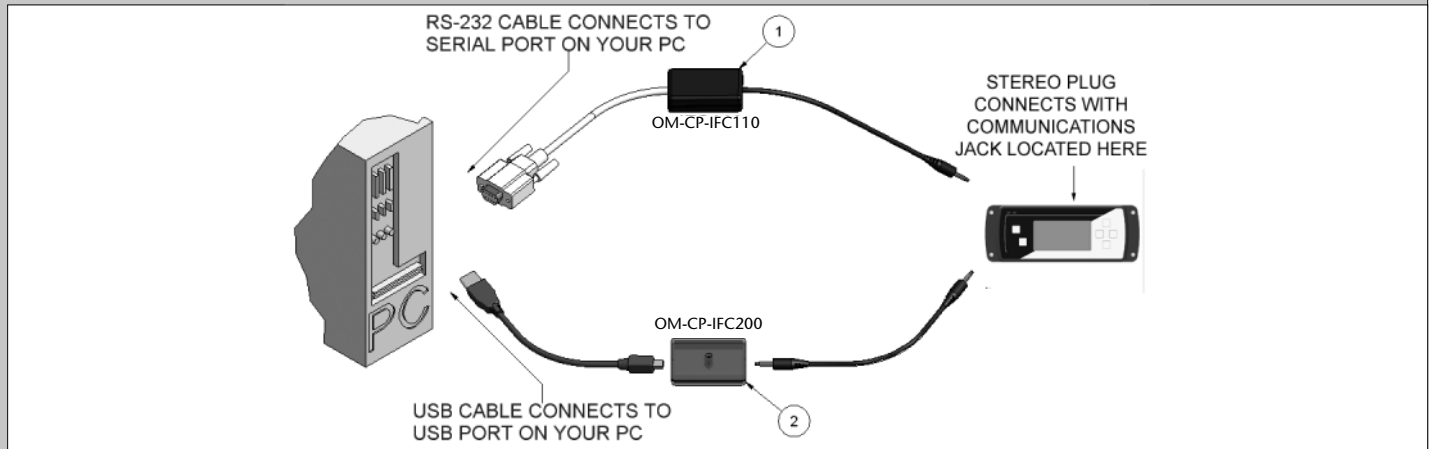
Battery Replacement

This product does not have any user-serviceable parts except the battery which should be replaced periodically. The battery life is affected by battery type, ambient temperature, sample rate, sensor selection, off-loads and LCD usage. The device has a battery status indicator on the LCD. If the battery indication is low, or if the device seems to be inoperable, it is recommended that the battery be replaced.

To replace the battery, locate the battery compartment cover on the back of the unit. Remove the two (2) 3/32 hex screws and expose the battery compartment. Use the pull tab to remove battery from compartment. Remove the old 9V battery from the battery clips and replace with a new 9V battery. We recommend using 9V lithium battery. An alkaline battery is acceptable, but will yield a shorter battery life.



Section 7: Computer Interface:



1. Fully insert the male connector of the OM-CP-IFC110 interface cable into the female receptacle of the data logger. Insert fully the RS232 connector into the Serial Port.

OR

2. Fully insert the male connector of the OM-CP-IFC200 interface cable into the female receptacle of the data logger. Fully insert the female USB connector into the USB. (*Please see the OMEGA Datalogger Software manual for further information*)

Note: Most OMEGA data loggers can use both OM-CP-IFC110 and OM-CP-IFC200 interface cables. For interface cable data logger clarification contact technical support at 1-800-848-4286.



WARRANTY/DISCLAIMER

OMEGA ENGINEERING, INC. warrants this unit to be free of defects in materials and workmanship for a period of **61 months** from date of purchase. OMEGA's WARRANTY adds an additional one (1) month grace period to the normal **five (5) year product warranty** to cover handling and shipping time. This ensures that OMEGA's customers receive maximum coverage on each product.

If the unit malfunctions, it must be returned to the factory for evaluation. OMEGA's Customer Service Department will issue an Authorized Return (AR) number immediately upon phone or written request. Upon examination by OMEGA, if the unit is found to be defective, it will be repaired or replaced at no charge. OMEGA's WARRANTY does not apply to defects resulting from any action of the purchaser, including but not limited to mishandling, improper interfacing, operation outside of design limits, improper repair, or unauthorized modification. This WARRANTY is VOID if the unit shows evidence of having been tampered with or shows evidence of having been damaged as a result of excessive corrosion; or current, heat, moisture or vibration; improper specification; misapplication; misuse or other operating conditions outside of OMEGA's control. Components in which wear is not warranted, include but are not limited to contact points, fuses, and triacs.

OMEGA is pleased to offer suggestions on the use of its various products. However, OMEGA neither assumes responsibility for any omissions or errors nor assumes liability for any damages that result from the use of its products in accordance with information provided by OMEGA, either verbal or written. OMEGA warrants only that the parts manufactured by the company will be as specified and free of defects. OMEGA MAKES NO OTHER WARRANTIES OR REPRESENTATIONS OF ANY KIND WHATSOEVER, EXPRESSED OR IMPLIED, EXCEPT THAT OF TITLE, AND ALL IMPLIED WARRANTIES INCLUDING ANY WARRANTY OF MERCHANTABILITY AND FITNESS FOR A PARTICULAR PURPOSE ARE HEREBY DISCLAIMED. LIMITATION OF LIABILITY: The remedies of purchaser set forth herein are exclusive, and the total liability of OMEGA with respect to this order, whether based on contract, warranty, negligence, indemnification, strict liability or otherwise, shall not exceed the purchase price of the component upon which liability is based. In no event shall OMEGA be liable for consequential, incidental or special damages.

CONDITIONS: Equipment sold by OMEGA is not intended to be used, nor shall it be used: (1) as a "Basic Component" under 10 CFR 21 (NRC), used in or with any nuclear installation or activity; or (2) in medical applications or used on humans. Should any Product(s) be used in or with any nuclear installation or activity, medical application, used on humans, or misused in any way, OMEGA assumes no responsibility as set forth in our basic WARRANTY/DISCLAIMER language, and, additionally, purchaser will indemnify OMEGA and hold OMEGA harmless from any liability or damage whatsoever arising out of the use of the Product(s) in such a manner.

RETURN REQUESTS/INQUIRIES

Direct all warranty and repair requests/inquiries to the OMEGA Customer Service Department. BEFORE RETURNING ANY PRODUCT(S) TO OMEGA, PURCHASER MUST OBTAIN AN AUTHORIZED RETURN (AR) NUMBER FROM OMEGA'S CUSTOMER SERVICE DEPARTMENT (IN ORDER TO AVOID PROCESSING DELAYS). The assigned AR number should then be marked on the outside of the return package and on any correspondence.

The purchaser is responsible for shipping charges, freight, insurance and proper packaging to prevent breakage in transit.

FOR **WARRANTY** RETURNS, please have the following information available BEFORE contacting OMEGA:

1. Purchase Order number under which the product was PURCHASED,
2. Model and serial number of the product under warranty, and
3. Repair instructions and/or specific problems relative to the product.

FOR **NON-WARRANTY** REPAIRS, consult OMEGA for current repair charges. Have the following information available BEFORE contacting OMEGA:

1. Purchase Order number to cover the COST of the repair,
2. Model and serial number of the product, and
3. Repair instructions and/or specific problems relative to the product.

OMEGA's policy is to make running changes, not model changes, whenever an improvement is possible. This affords our customers the latest in technology and engineering.

OMEGA is a registered trademark of OMEGA ENGINEERING, INC.

© Copyright 2007 OMEGA ENGINEERING, INC. All rights reserved. This document may not be copied, photocopied, reproduced, translated, or reduced to any electronic medium or machine-readable form, in whole or in part, without the prior written consent of OMEGA ENGINEERING, INC.

Where Do I Find Everything I Need for Process Measurement and Control?

OMEGA...Of Course!

Shop online at omega.comsm

TEMPERATURE

- Thermocouple, RTD & Thermistor Probes, Connectors, Panels & Assemblies
- Wire: Thermocouple, RTD & Thermistor
- Calibrators & Ice Point References
- Recorders, Controllers & Process Monitors
- Infrared Pyrometers

PRESSURE, STRAIN AND FORCE

- Transducers & Strain Gages
- Load Cells & Pressure Gages
- Displacement Transducers
- Instrumentation & Accessories

FLOW/LEVEL

- Rotameters, Gas Mass Flowmeters & Flow Computers
- Air Velocity Indicators
- Turbine/Paddlewheel Systems
- Totalizers & Batch Controllers

pH/CONDUCTIVITY

- pH Electrodes, Testers & Accessories
- Benchtop/Laboratory Meters
- Controllers, Calibrators, Simulators & Pumps
- Industrial pH & Conductivity Equipment

DATA ACQUISITION

- Data Acquisition & Engineering Software
- Communications-Based Acquisition Systems
- Plug-in Cards for Apple, IBM & Compatibles
- Datalogging Systems
- Recorders, Printers & Plotters

HEATERS

- Heating Cable
- Cartridge & Strip Heaters
- Immersion & Band Heaters
- Flexible Heaters
- Laboratory Heaters

ENVIRONMENTAL MONITORING AND CONTROL

- Metering & Control Instrumentation
- Refractometers
- Pumps & Tubing
- Air, Soil & Water Monitors
- Industrial Water & Wastewater Treatment
- pH, Conductivity & Dissolved Oxygen Instruments