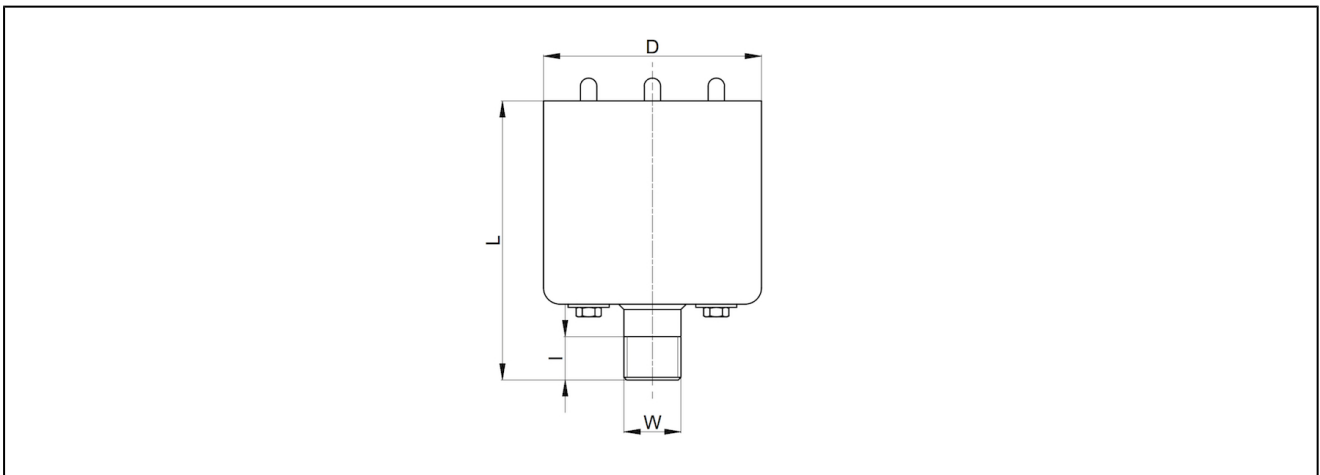


high performance silencer series SLH-CP



| | |
|--------------------|--|
| design | multi-chamber silencer made of sheet steel with 3 polyester felts |
| thread connections | G1/2"...G2" according to ISO228/1 |
| material | body steel galvanic zinc plated, perforated sheet zinc plated steel, felts made of polyester |
| function | for silencing, high exhaust rate |
| mounting position | any |
| medium | compressed air, neutral gases |
| medium temperature | -10°C...+90°C |
| operating pressure | max. 6bar |
| information | polyester-felts can be cleaned with cleaning solvent |

dimensions



| W | I | L | D | nominal flow rate [NI/min] | weight [kg] | type |
|---------|----|-----|-----|-------------------------------|----------------|-------------|
| G1/2" | 14 | 103 | 80 | 13300 | 0,42 | SLH-M12-CP |
| G3/4" | 16 | 106 | 80 | 16700 | 0,44 | SLH-M34-CP |
| G1" | 18 | 134 | 110 | 23300 | 0,91 | SLH-M10-CP |
| G1 1/4" | 20 | 140 | 110 | 31700 | 0,93 | SLH-M114-CP |
| G1 1/2" | 24 | 172 | 150 | 53400 | 1,70 | SLH-M112-CP |
| G2" | 24 | 172 | 150 | 56700 | 1,70 | SLH-M20-CP |

illustrations are for information only and are non-binding
all designs, configurations, measurements and materials are subject to change without prior notice