



α DA10-24B

Standard dimensions



Model MF10-15XB



Model MF10-15YB

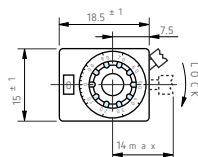


Model MF20-22B

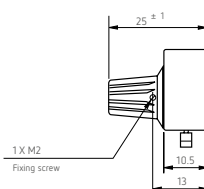
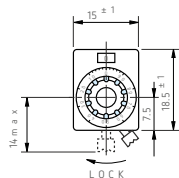


Model MF20-46B

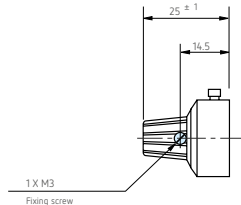
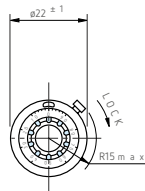
- Model MF10-15XB
- Model MF10-15XBD (without flexible coupling)



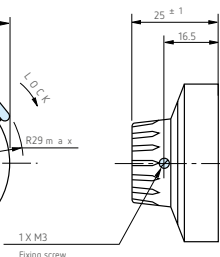
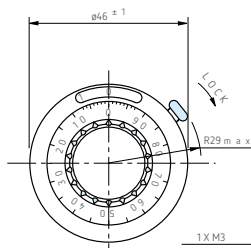
- Model MF10-15YB
- Model MF10-15YBD (without flexible coupling)



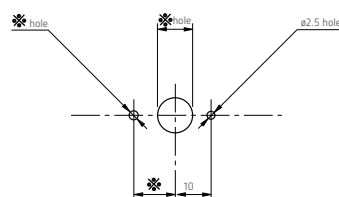
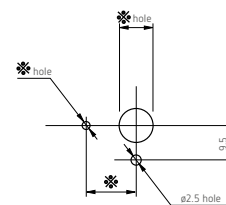
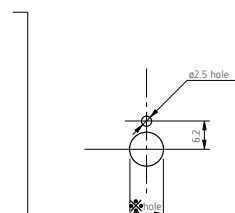
- Model MF20-22B



- Model MF20-46B

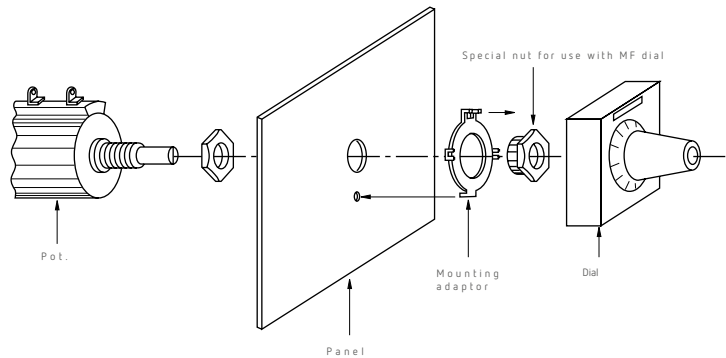


Panel Arrangements



Note: The dimensions of mark * are determined by the potentiometer to be mounted.

■ How to mount MF Series



The mounting adaptor as well as specially shaped nut only for use with Model MF Series Dials and Helicalohm pot. are fixed on the panel according to the illustration given above.

The shaft of the Helicalohm pot. is turned anticlockwise to its limit and is put into the mounting hole of the dial which was already set at "0". At the same time, 4

projections of the mounting adaptor are inserted in 4 receiving holes prepared on the base plate of the dial and then all parts should be pressed to the panel firmly to eliminate any space. The shaft of the potentiometer is fixed by the hexagonal nut positioned in the knob of the dial by screwing it with an attached hexagonal wrench. With this, the mounting is completed.