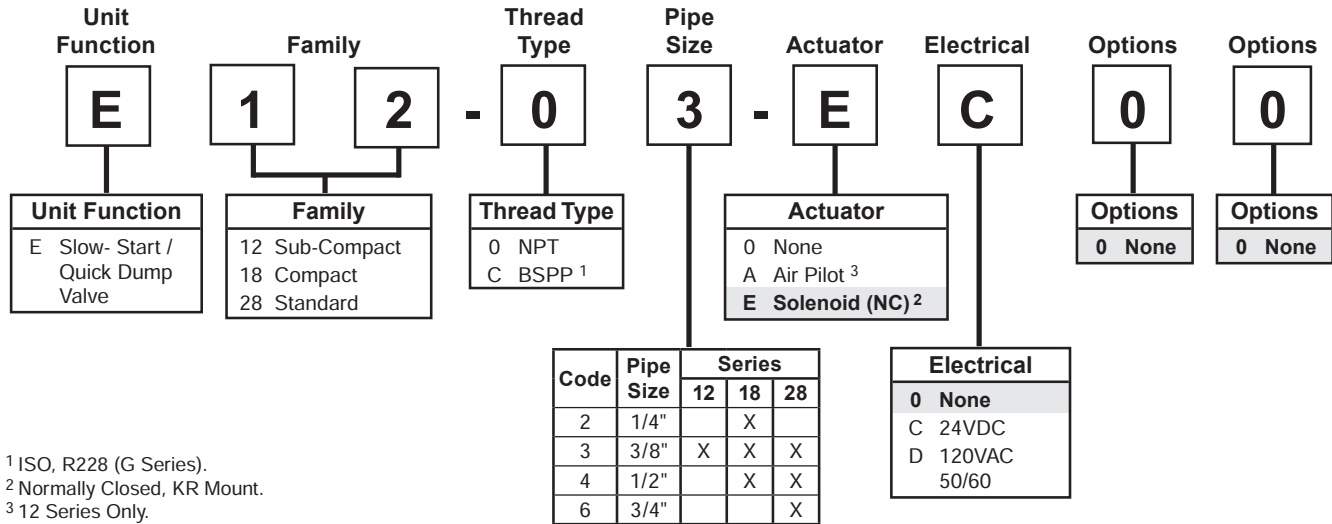


Slow-Start / Quick Dump Valve Numbering System

 = "Most Popular"

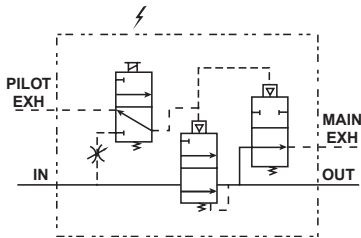


Slow-Start / Quick Dump Valve

The Slow-Start / Quick Dump Valve is designed as a three-way Quick Dump Valve with a built-in Slow-Start capability. This Slow-Start capability allows control of downstream pressure buildup at start-up of a compressed air system. The combination of Slow-Start and Quick Dump reduces the number of pneumatic components and the unique volume-independent design allows any number of additions to the pneumatic circuit without readjusting the Slow-Start function.

Slow-Start / Quick Dump Valve E18 / E28

= "Most Popular"



E18-03-EC00

C

Features

- Modular Design
- True Volume Independence
- High Flow Capacity
- Choice of Two Exhaust Port Locations

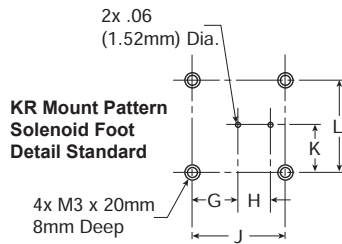
Specifications

Flow Capacity*	E18	1/4	95 SCFM (44.8 dm ³ /s)
		3/8	101 SCFM (47.7 dm ³ /s)
		1/2	113 SCFM (53.3 dm ³ /s)
	E28	3/8	196 SCFM (92.5 dm ³ /s)
		1/2	210 SCFM (99.1 dm ³ /s)
		3/4	230 SCFM (108.5 dm ³ /s)
Exhaust Ports	NPT / BSPP-G		E18 3/8
Right Side and Rear			E28 3/8
Maximum Supply Pressure	150 PSIG (10.3 bar)		
Minimum Pressure	30 PSIG (2.1 bar)		
Operating Temperature	32° to 150°F (0° to 65.5°C)		
Port Size	NPT / BSPP-G	E18	1/4, 3/8, 1/2
		E28	3/8, 1/2, 3/4
Weight	lb. (kg)	E18	2.23 (1.01)
		E28	2.50 (1.14)

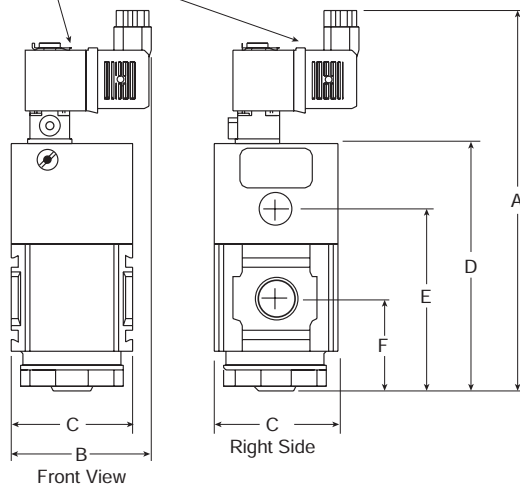
* Inlet pressure 150 PSIG (10.3 bar). Pressure drop 5 PSID (0.3 bar).

Materials of Construction

Body	Aluminum
Bottom Plug	33% Glass-Filled Nylon
Seals	Nitrile
Springs	Music Wire / Stainless Steel
Valve Assembly	Brass / Nitrile



Solenoid can be rotated for mounting convenience



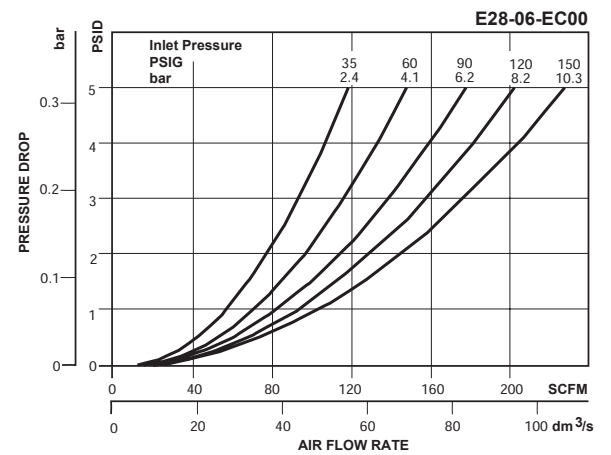
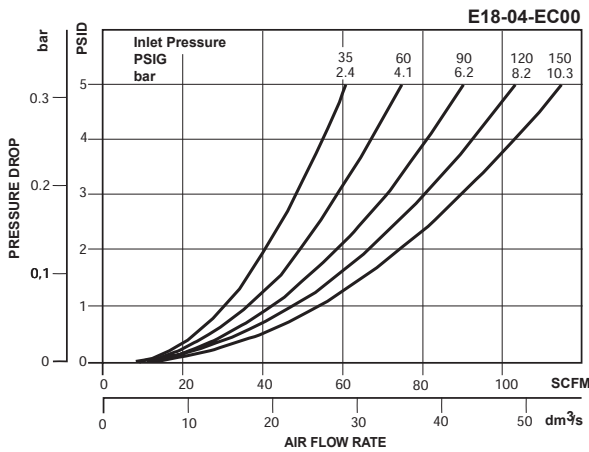
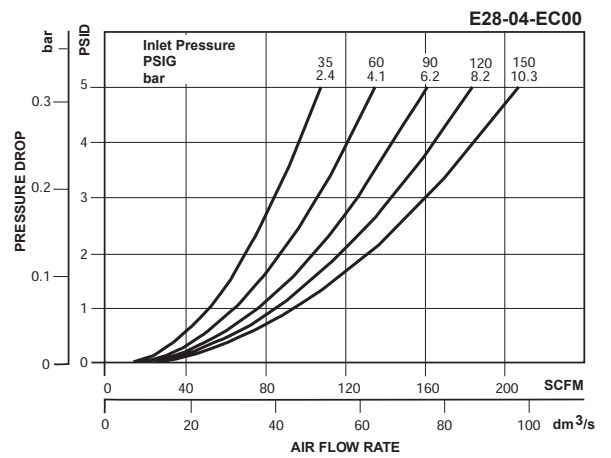
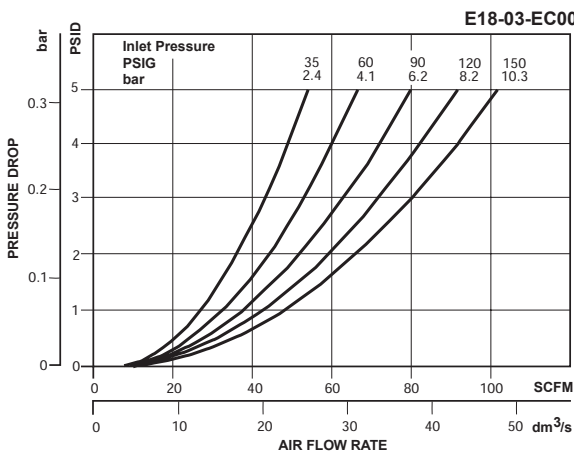
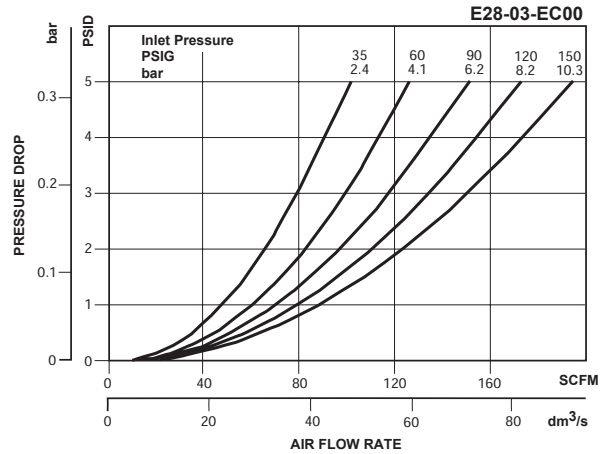
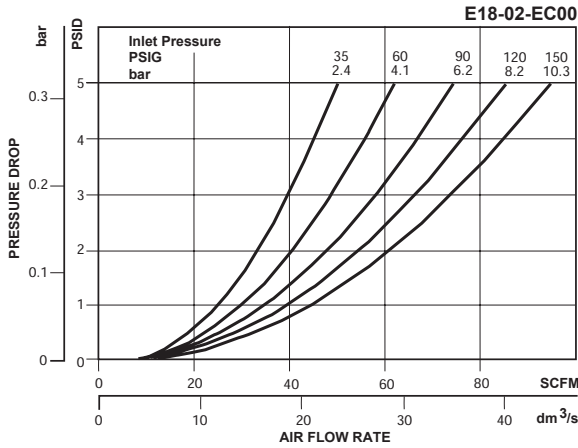
Replacement Kits

Actuating Valve, KR Mount, 24VDC	VRP-95-776
Actuating Valve, KR Mount, 120VAC	VRP-95-777
Actuating Valve, CNOMO, 24VDC	VRP-95-778
Actuating Valve, CNOMO, 120VAC	VRP-95-779
Muffler	VRP-95-780
Valve / Spring Kit	VRP-95-781
Repair Kit (Includes Valve / Spring)	VRP-95-782
Body Cap Kit (E18)	VRP-95-784
Body Cap Kit (E28)	VRP-95-785
KR to CNOMO Adapter Block	VRP-95-712
C-Bracket -	
E18	GPA-97-086
E28	GPA-97-087

Dimensions

Models	Inches (mm)	A	B	C	D	E	F	G	H	J	K	L
Standard Unit E18-XX-EC00		7.32 (186)	2.70 (68.5)	2.36 (60)	4.79 (121.6)	3.52 (89.4)	1.79 (45.4)	0.28 (7.0)	0.18 (4.6)	0.55 (14)	0.28 (7.0)	0.55 (14)
Standard Unit E28-XX-EC00		7.32 (186)	2.96 (75.1)	2.88 (73.1)	4.79 (121.6)	3.52 (89.4)	1.79 (45.4)	0.28 (7.0)	0.18 (4.6)	0.55 (14)	0.28 (7.0)	0.55 (14)

= "Most Popular"



Ordering Information

Model Type	Port Size	24V / DC N.C.	120V / 60 Hz N.C.
E18	1/4	E18-02-EC00	E18-02-ED00
	3/8	E18-03-EC00	E18-03-ED00
	1/2	E18-04-EC00	E18-04-ED00
E28	3/8	E28-03-EC00	E28-03-ED00
	1/2	E28-04-EC00	E28-04-ED00
	3/4	E28-06-EC00	E28-06-ED00

Options - To order an option supplied with the unit model, add the appropriate coded suffix letter in the designated position of the model number.

