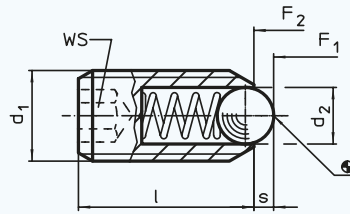


EH 22030.

Spring Plungers

with ball and internal hexagon



>>> Special types upon request. <<<
Thread lock upon request, please refer to appendix - Technical Data -
Spring range and forces are precisely tested.

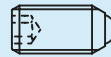


Material:

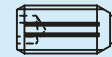
- Body:** • Free cutting steel, blackened • Stainless steel 1.4305
Ball: • Ball-bearing steel, hardened • Stainless steel, hardened
Spring: • Stainless steel

Characteristic:

Standard spring load: no marking
Heavy spring load: marked with two lines



Standard spring load



Heavy spring load

Note:

To be used for locating or for applying pressure, as a detent or for ejection.
Temperature range up to 250 °C.

Ref. No.	Finish	d ₁	d ₂	l	s	WS	Spring load F ₁ N≈*	Spring load F ₂ N≈*	Δg	
22030.0003	free cutting steel, standard spring load	M 3	1,5	8	0,4	1,5	3,0	4,5	0,30	
22030.0004		M 4	2,5	12	0,8	2,0	8,5	14,0	0,70	
22030.0005		M 5	3,0	14	0,9	2,5	8,0	14,0	1,20	
22030.0006		M 6	3,5	15	1,0	3,0	11,0	18,0	1,80	
22030.0008		M 8	4,5	18	1,5	4,0	18,0	31,0	3,90	
22030.0010		M 10	6,0	23	2,0	5,0	24,0	45,0	8,10	
22030.0012		M 12	8,0	26	2,5	6,0	26,0	49,0	13,00	
22030.0016		M 16	10,0	33	3,5	8,0	41,0	86,0	32,00	
22030.0020		M 20	12,0	43	4,5	10,0	56,0	111,0	66,00	
22030.0024		M 24	15,0	48	5,5	12,0	81,0	151,0	106,00	
22030.0045	free cutting steel, heavy spring load	M 5	3,0	14	0,9	2,5	15,0	22,0	1,20	
22030.0046		M 6	3,5	15	1,0	3,0	19,0	28,0	1,80	
22030.0048		M 8	4,5	18	1,5	4,0	36,0	62,0	4,10	
22030.0050		M 10	6,0	23	2,0	5,0	57,0	104,0	8,20	
22030.0052		M 12	8,0	26	2,5	6,0	61,0	110,0	13,00	
22030.0056		M 16	10,0	33	3,5	8,0	68,0	142,0	32,00	
22030.0060		M 20	12,0	43	4,5	10,0	84,0	166,0	66,00	
22030.0064		M 24	15,0	48	5,5	12,0	127,0	237,0	106,00	
22030.0203		stainless steel, standard spring load	M 3	1,5	8	0,4	1,5	3,0	4,5	0,28
22030.0204			M 4	2,5	12	0,8	2,0	8,5	14,0	0,80
22030.0205	M 5		3,0	14	0,9	2,5	8,0	14,0	1,30	
22030.0206	M 6		3,5	15	1,0	3,0	11,0	18,0	1,90	
22030.0208	M 8		4,5	18	1,5	4,0	18,0	31,0	4,10	
22030.0210	M 10		6,0	23	2,0	5,0	24,0	45,0	8,20	
22030.0212	M 12		8,0	26	2,5	6,0	26,0	49,0	13,00	
22030.0216	M 16		10,0	33	3,5	8,0	41,0	86,0	32,00	
22030.0220	M 20		12,0	43	4,5	10,0	56,0	111,0	67,00	
22030.0224	M 24		15,0	48	5,5	12,0	81,0	151,0	107,00	
22030.0245	stainless steel, heavy spring load	M 5	3,0	14	0,9	2,5	15,0	22,0	1,20	
22030.0246		M 6	3,5	15	1,0	3,0	19,0	28,0	1,90	
22030.0248		M 8	4,5	18	1,5	4,0	36,0	62,0	4,20	
22030.0250		M 10	6,0	23	2,0	5,0	57,0	104,0	8,20	
22030.0252		M 12	8,0	26	2,5	6,0	61,0	110,0	13,00	
22030.0256		M 16	10,0	33	3,5	8,0	68,0	142,0	32,00	
22030.0260		M 20	12,0	43	4,5	10,0	84,0	166,0	66,00	
22030.0264		M 24	15,0	48	5,5	12,0	127,0	237,0	107,00	

* statistical average value